

# Solutions for Your Fleet

ELD Mandate



# There Are Many Benefits of the ELD Mandate



Drivers save time by reducing paper



Dispatchers stay informed about a driver's status with updates



Reduces hassle of maintaining a paper log



Safety is improved through transparency of driver behavior



## Important ELD Mandate Milestones

June  
2012

Congress enacted MAP-21: "Moving Ahead for Progress in the 21st Century" bill stating Electronic Logging Devices (ELDs\*) must be implemented to record Hours of Service (HOS)  
\* Smartphones and tablets also work if they meet FMCSA requirements

December  
2015

Final ELD mandate rules published

December  
2017

Commercial Motor Vehicles (CMVs) must have either an Automatic On-Board Recording Device (AOBRD) or an ELD installed by December 18, 2017

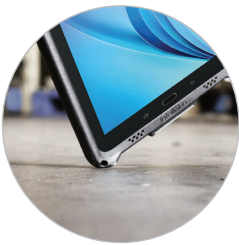
December  
2019

A registered and ELD-compliant device must be installed by December 16, 2019

# What Makes IntelliSkin™ the Best Choice for Your ELD?

Always Protected.  
Always Connected.™

IntelliSkin with GDS® allows you to protect, dock, and charge your device so you are always protected, always connected.



Case protects device from drops



Shock-absorbing nitrile rubber ball reduces vibration and device wear



Overmolded charging connector protects the charging port



Rugged mount secures your device where you need it



Universal connection helps future-proof your business



GDS dock allows you to easily charge your device in your vehicle

IntelliSkin™ with GDS®



Protect.  
Certified MIL-STD-810G drop protection



Charge.  
Integrated charging connector keeps your device powered



Dock.  
The distinctive D-shape™ connector standardizes vehicle and desktop docks

Rugged Protection

IntelliSkin is a rugged case for consumer tablets that allows for frequent device docking and undocking. This case extends the life of your device by providing MIL-STD-810G drop protection and preventing damage to the device charging connector from repetitive plugging and unplugging. IntelliSkin and GDS is a new standard platform for making connections between any electronic device and a dock for power and data communication.



Award-Winning Technology

The Material Handling Institute and the Consumer Technology Association have both recognized IntelliSkin and GDS with awards for innovation. The awards honor the groundbreaking design and engineering that IntelliSkin offers your fleet.



## ELD Pro Bundle

Featuring an IntelliSkin™ case to provide maximum device and charging port protection, the pro bundle also comes with a GDS® dock to allow for in-vehicle charging. Additional components include a drill-down dash mount that absorbs shock and vibration, a backing plate for increased support, a hardwire charger and locking/non-locking options.



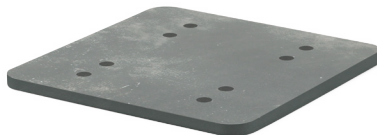
IntelliSkin and GDS Vehicle Dock



Hardwire Charger



Drill-Down Dash Mount



Backing Plate



Installation Hardware

# How Does IntelliSkin™ Deliver a Scalable Solution for Your Fleet?

## Devices Evolve – Future Proof Your Investment

When the time inevitably comes to upgrade your ELD-compliant tablets, the IntelliSkin with GDS Technology™ ecosystem standardizes your charging connector so you can always use the latest technology.



## The Ideal Solution for Your Fleet

IntelliSkin™ with GDS Technology™ is the ideal solution to protect your device and keep it charged. When charging isn't needed, RAM® Mounts offers two spring-loaded, quick release cradles.

### Tab-Tite™

for light duty use

This cradle's interchangeable end cups can be replaced to accommodate new devices, lowering the cost of upgrading your hardware.



Spring-loaded cradle allows for quick removal of your device



Interchangeable end cup

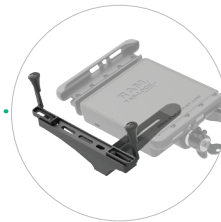
### Tab-Lock™

for heavy duty use

This cradle provides a secure fit with easy access to the mounted tablet. The dock features a keyed lock for theft deterrence.



Interchangeable end cup



Side arm accessory for extra support in landscape mode



Lock for theft deterrence

Secure Your Device with  
the Durable X-Grip®

The spring-loaded X-Grip is a secure solution for mounting your phone or tablet in-vehicle. Built with stainless steel components and high-strength composite, the X-Grip delivers durable and easy-to-use mounting for your devices.







RAM-HOL-UN7BU  
for phones



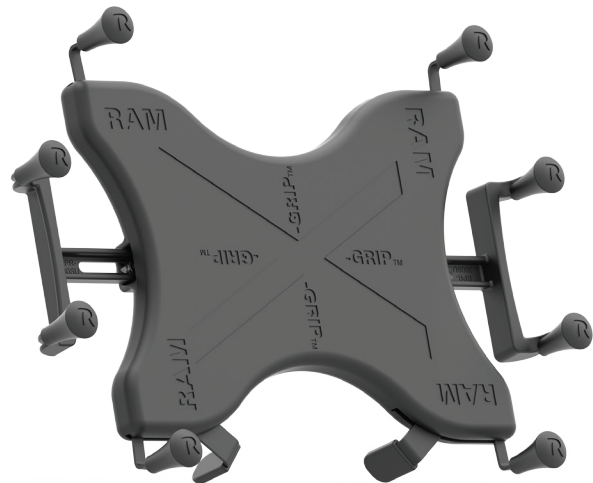
RAM-HOL-UN10BU  
for larger phones



RAM-HOL-UN8BU  
for 7" - 8" tablets



RAM-HOL-UN9U  
for 9" - 10" tablets



RAM-HOL-UN11U  
for 11" - 12" tablets

---

Drill-Down  
Dash Mount

The 2.5" base can be screwed into any structural surface and the arm is available with a standard knob or a locking knob. Use our backing plate accessory for extra support to your mounting surface, ensuring your device is secure.

---

RAM® Pod HD™

Blending the best of versatility, strength and installation ease, the RAM Pod HD is a universal No-Drill™ vehicle mount. Compatible with a wide range of vehicles, this tablet stand provides a sturdy, adjustable mounting solution.



Backing Plate

Drill-Down Dash Mount

RAM® Pod HD™

---

## Stubby™ Cup Holder

The RAM® Stubby cup holder is a low-profile base that fits into any cup holder. The durable composite shell and flexible support fins can be trimmed to size, making this base a portable and versatile solution.

---

## Twist-Lock™ Suction Cup

Use the Twist-Lock Suction Cup to attach devices to your windshield, side window or any other non-porous surface. The mechanical Twist-Lock seal of the suction cup latches onto flat surfaces with a strong connection.

---



Twist-Lock™ Suction Cup



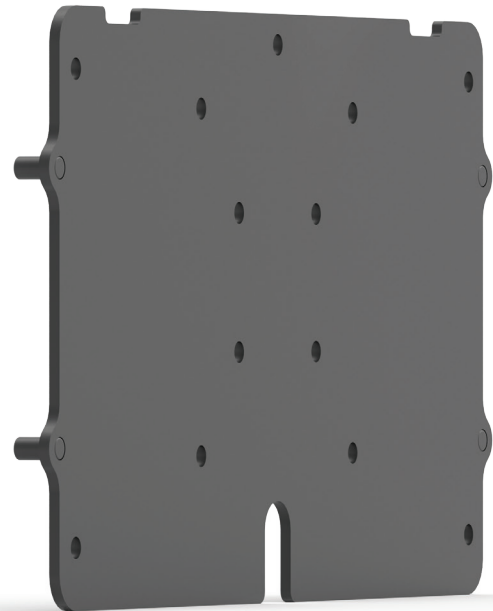
Stubby™ Cup Holder

## Vehicle Dash Mounting Plates

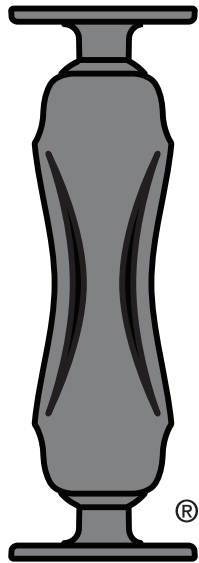
RAM® makes customized dash plates for a variety of vehicles. With these plates installed, you can attach any of the bases with the AMPs hole pattern for an ideal fit.



Vehicle Dash Mounting Plate  
for Kenworth T680



Vehicle Dash Mounting Plate  
for International Navistar



The RAM® Hourglass Shape® of the Double Socket Arms is a registered trademark of National Products Inc.

RAM Double Socket Arms offer a distinctive Hourglass Shape that is designed to provide optimal performance for most any mounting application. They are recognized globally for the strength and flexibility they offer.

The unique RAM Mounts system offers a full line of interchangeable mounting bases, extensions, device adapters and accessories to secure your gear where you want it.

RAM Mounts are guaranteed for life and are proudly manufactured in Seattle, Washington, USA. See all of the innovative products and solutions RAM Mounts manufactures at [rammount.com](http://rammount.com).

RAM Mounts is a division of National Products Inc.

8410 Dallas Avenue South  
Seattle, WA 98108  
Phone: 800.497.7479  
[sales@rammount.com](mailto:sales@rammount.com)  
[rammount.com](http://rammount.com)

Lifetime Warranty

Patents and Trademarks  
[www.rammount.com/ip](http://www.rammount.com/ip)



The distinctive D Shape™ of the GDS® connector is a trademark of National Products Inc.



The distinctive RAM X-Grip® Shape is a registered design and trademark of National Products Inc.



GDS®, IntelliSkin™, GDS Tech™, GDS Technology™, GDS Green™ and GDS Compatible™ are trademarks or registered trademarks of National Products Inc.

---

## Contact Us

[sales@rammount.com](mailto:sales@rammount.com)

1-800-497-7479

---

## Join Our Community

